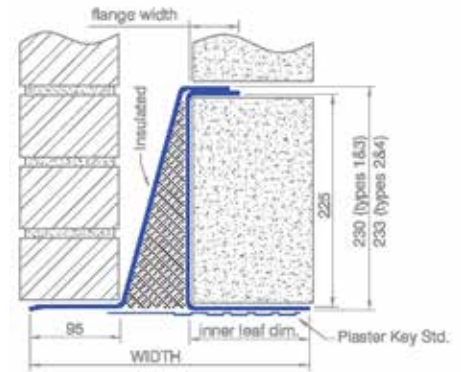


Cavity wall lintels - longer spans

CC22 range

CC22 Lintels are light but strong, offering a cost effective solution for longer spans with higher inner loads.



Specification table for CC22 Lintels

Nominal cavity size (mm)	Nominal inner leaf (mm)	SPECIFY	Overall Height (mm)	Overall Width (mm)	Steel Gauge (mm)	Mass (kg/m)	Form Type	Ixx (cm ⁴)	Zxx (cm ³)
47-56	100-115	CC22-100/50/100	231	242	2.0	11.5	1	1094.0	82.88
	125-140	CC22-100/50/125	231	267	2.0	11.5	1	1048.0	74.86
	190-215	CC22-100/50/190	233	332	2.0	15.4	2	1370.0	83.54
57-71	100-115	CC22-100/60/100	231	252	2.0	11.5	1	1089.0	81.88
	125-140	CC22-100/60/125	231	277	2.0	11.5	1	1044.0	74.57
	190-215	CC22-100/60/190	233	342	2.0	15.7	2	1362.0	82.55
72-84	100-115	CC22-100/75/100	231	267	2.0	11.5	1	1079.0	81.13
	125-140	CC22-100/75/125	231	292	2.0	11.5	1	1032.0	73.19
	190-215	CC22-100/75/190	233	357	2.0	16.1	2	1405.0	84.64
85-96	100-115	CC22-100/90/100	231	280	2.0	11.5	1	1069.0	79.78
	125-140	CC22-100/90/125	231	305	2.0	11.5	1	1021.0	71.90
	190-215	CC22-100/90/190	233	370	2.0	16.6	2	1418.0	84.40
97-119	100-115	CC22-100/100/100	231	289	2.0	11.5	1	1064.0	80.61
	125-140	CC22-100/100/125	231	317	2.0	11.5	1	1011.0	72.21
	190-215	CC22-100/100/190	233	382	2.0	16.3	2	1475.0	90.49
120-139	100-115	CC22-100/120/100	231	315	2.0	12.2	3	1166.0	90.39
	125-140	CC22-100/120/125	231	340	2.0	12.1	3	1123.0	82.57
	190-215	CC22-100/120/190	233	405	2.0	17.2	4	1552.0	94.63
140-160	100-115	CC22-100/140/100	231	335	2.0	12.1	3	1129.0	86.85
	125-140	CC22-100/140/125	231	360	2.0	15.1	4	1371.0	89.03
	190-215	CC22-100/140/190	233	425	2.0	17.4	4	1471.0	87.56

NOTES: The actual lintel form varies over the range to maintain uniform load capacity, see below. Type CC22 lintels do not require a separate DPC for installation, and are supplied standard with stop ends*

Need a stronger lintel? See CC23 >

Allowable load for all CC22 Lintels*

Opening span	Lintel std length	Max total load (kN)*	Load Example**
1200	1500	43.1	masonry & tiled roof
1350	1650	43.1	
1500	1800	43.1	
1650	1950	43.1	
1800	2100	43.1	
1950	2250	43.1	
2100	2400	43.1	
2250	2550	43.1	
2400	2700	43.1	masonry & timber floor
2550	2850	43.1	
2700	3000	43.1	
2850	3150	40.8	
3000	3300	38.8	full height masonry
3150	3450	37.1	
3300	3600	35.5	
3450	3750	34.0	
3600	3900	31.3	
3750	4050	28.8	
3900	4200	26.7	
4050	4350	24.7	900mm of masonry
4200	4500	23.0	
4350	4650	21.4	
4500	4800	20.0	

Intermediate sizes can be produced

Permissible Moment*: 16.3 kN.m
Permissible Point Load*: 12.3 kN

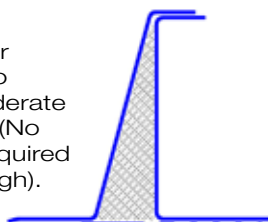
LOAD LOAD RATIO LIMITS* (OUTER : INNER)
65-100% Max load: 1:2 - 1:14 OR < 65% Max Load: 1:1 - 1:19

*See page 78 for loading & installation guide
**See page 85 for load scenario details

STANDARD VARIATIONS OF ALL CC-TYPE LINTELS

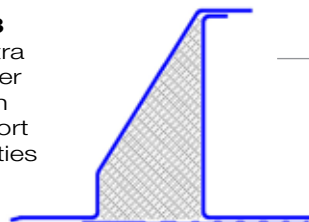
FORM TYPE 1

Standard form for Cavity sizes up to 120mm and moderate inner leaf widths (No separate DPC required if over 150mm high).



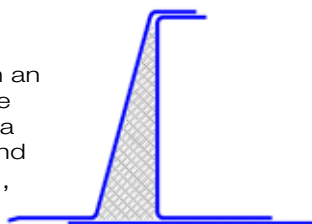
FORM TYPE 3

Features an extra bend in the outer web to maintain outer leaf support over wider cavities



FORM TYPE 2

Form type 1 with an extra plate on the base to support a wide inner leaf and resist associated,



FORM TYPE 4

Form type 3 with an extra plate on the base to support a wide inner leaf in addition to the wide cavity,

